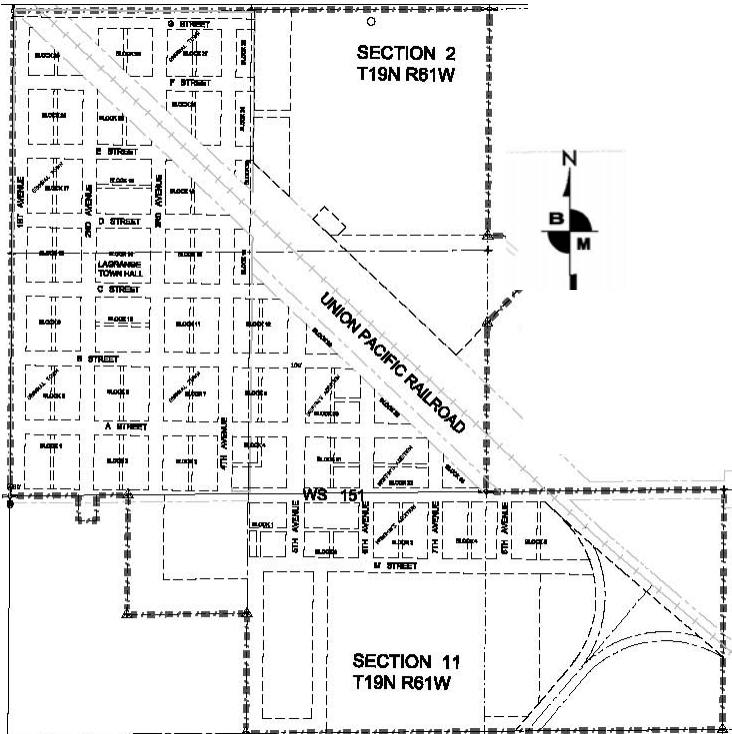


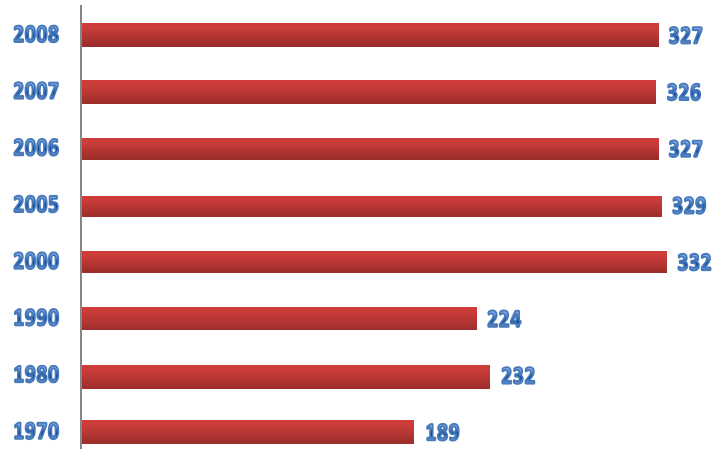


LaGrange, Wyoming

2009 Community Profile



POPULATION



After a large increase in the 1990's, the Town of LaGrange's population has remained relatively constant and is projected to remain stable the next 25 years.

Age

Median age of the community is 22.

Age Range	Number	%
Under 19	96	28.9
20 to 44	112	33.7
45 to 64	35	10.5
65 and older	37	11.1

Population by Race

	%
White Alone	94.0
Black or African American	0.3
American Indian	1.8
Asian	1.2
Pacific Islander	0.3
Some Other Race Alone	0.6
Two or More Races	1.8
Hispanic Origin	7.5

LOCATION

LaGrange is a small rural community located in southern Goshen County. It is situated just a few miles off of US Hwy 85 only 33 miles south of the county seat, Torrington and 56 miles northeast of the state capitol, Cheyenne.

Distance to nearby cities:

Scottsbluff, NE	52 miles
Cheyenne, WY	56 miles
Casper, WY	178 miles
Denver, CO	154 miles

COMMUNITY/RECREATION FACILITIES

Number of Churches	2
Nearest Lodging	Torrington, WY, 33 miles
Museums	1
Parks	3, including baseball diamond/soccer field
Rodeo Arena	1
Nearby Lakes	Hawk Springs Reservoir 13 miles northwest

CLIMATE

Average Number of Days of Sunshine	310
Average High Temperature for July	87.3°F
Average Low Temperature for July	53.4°F
Average High Temperature for January	40.3°F
Average Low Temperature for January	13.8°F

INCOME LEVELS (2000)

Median household income	\$18,750
Median family income	\$27,917
Per capita income	\$8,056
Families below poverty level	28.3%
Individuals below poverty level	24.6%

EDUCATION

LaGrange Elementary - K through 6th Grade

2nd Street & D Street, LaGrange | (307) 834-2311

School enrollment: 30

Junior High/High School - 7th through 12th Grade

Students bused to Southeast School in Yoder

1 Lacy Street, Yoder (23 miles north) | (307) 532-7176

www.goshen.k12.wy.us

Eastern Wyoming College - 2 year Community College

3200 West C Street, Torrington (35 miles north)

http://ewc.wy.edu

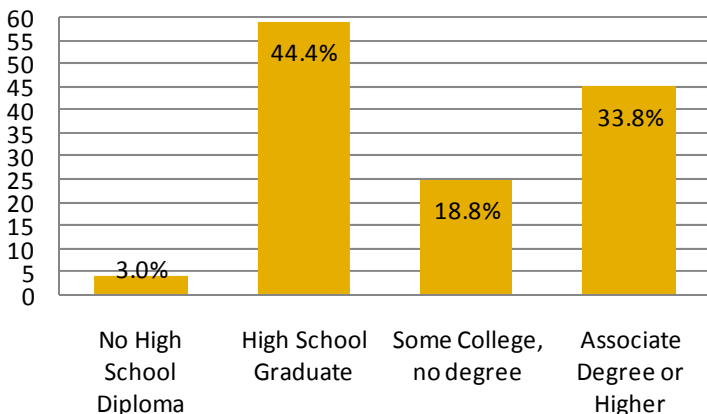
Frontier School of the Bible - private bible college

125 5th Avenue, LaGrange | (307) 834-2215

Enrollment: 200

www.frontierbible.org

Educational Attainment



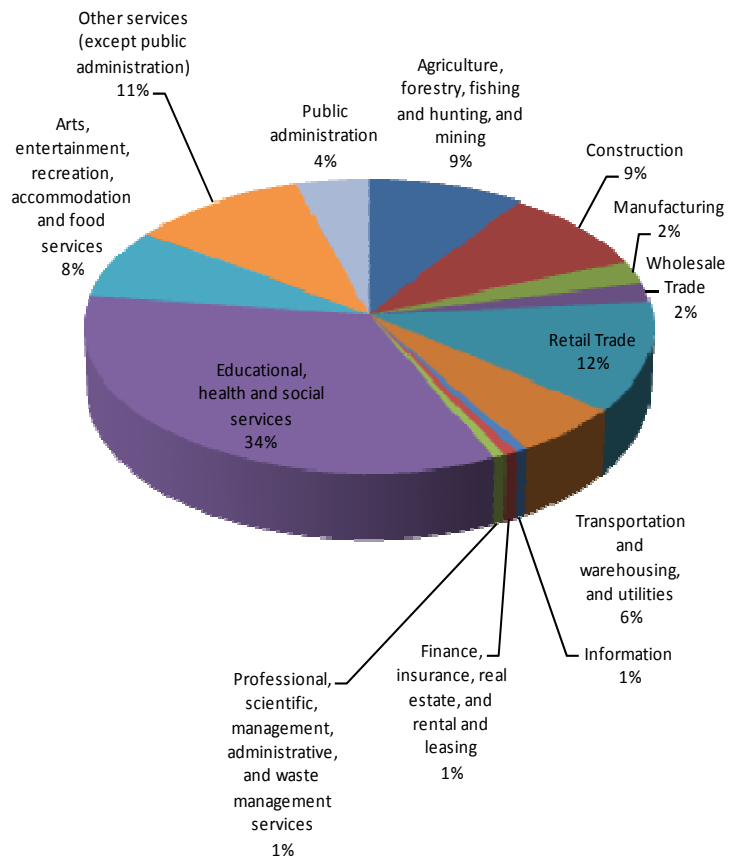
HOUSING

Total Units	108
Total Occupied Units	79.6%
Owner Occupied	55.8%
Renter Occupied	44.2%
Median Home Value	\$128,042
Median Rent	\$472

AREA BUSINESSES

Farming/ranching, potato warehouse, 2 restaurants, grocery store, garage, sawmill, chimney cleaning, and real estate.

Percent by Industry



Town of LaGrange
200 C Street
PO Box 185
LaGrange, WY 82221
(307) 834-2466

www.lagrangewyo.com

www.goshenwyo.com
GOSHEN COUNTY ECONOMIC DEVELOPMENT CORP.
117 West 22nd Avenue | PO Box 580 | Torrington, WY 82240
phone (307) 532-5162 | fax (307) 532-7641 | progress@goshenwyo.com